

# BURKINA FASO

## COUNTRY REPORT



**GIS Hydropower Resource  
Mapping and Climate  
Change Scenarios  
for the ECOWAS  
Region**





## Imprint



**Title:** GIS Hydropower Resource Mapping and Climate Change Scenarios for the ECOWAS Region, Country Report for Burkina Faso

**Publisher:** ECOWAS Centre for Renewable Energy and Energy Efficiency (ECREEE), Praia, Cabo Verde. *All results and maps are published on the ECOWAS Observatory for Renewable Energy and Energy Efficiency - [www.ecowrex.org/smallhydro](http://www.ecowrex.org/smallhydro)*

**Contact:** [info@ecreee.org](mailto:info@ecreee.org)

March 2017

### Program Responsibility:

The ECOWAS Small-Scale Hydropower Program was approved by ECOWAS Energy Ministers in 2012. In the frame of this program ECREEE assigned Pöyry Energy GmbH in 2015 for implementation of a GIS Hydro Resource Mapping and Climate Change Scenarios in ECOWAS countries with Hydropower potentials. One deliverable of this project are 14 country reports summarizing the GIS Hydro Resource mapping and climate change scenarios. The overall methodology background information and lessons learnt of these Country Reports are described in the final report *“GIS Hydropower Resource Mapping and Climate Change Scenarios for the ECOWAS Region - Methodology & Lessons Learnt.”*

[www.ecowrex.org/smallhydro](http://www.ecowrex.org/smallhydro)

### Project Team:



#### Pöyry Energy GmbH, Vienna, Austria

Mr. Harald Kling (project management, team leader hydrology)

Mr. Martin Fuchs (team leader hydropower)

Mr. Philipp Stanzel (team leader climate change)

Ms. Maria Paulin

Mr. Bernhard Wipplinger

Mr. Stefan Wimmer

Ms. Elisabeth Freiberger

Mr. Christoph Libisch

Mr. Raimund Mollner

Mr. Rudolf Faber

Mr. Herbert Weilguni



#### ECOWAS Centre for Renewable Energy and Energy Efficiency, Praia, Cabo Verde

Mr. Mahama Kappiah, Executive Director

Mr. Hannes Bauer, Project Management, Lead hydropower Program

Mr. Daniel Paco, GIS Expert

#### The ECOWAS Small-Scale Hydropower Program is managed by:

ECOWAS Centre for Renewable Energy and Energy Efficiency (ECREEE)

Mr. Hannes Bauer, ECREEE

Contact: [info@ecreee.org](mailto:info@ecreee.org)

### Project Funding



Austrian Development Cooperation – ADC

Spanish Ministry of External Affairs and Cooperation - AECID



## PREFACE

The 15 countries of the Economic Community of West African States (ECOWAS) face a constant shortage of energy supply, which has negative impacts on social and economic development, including also strongly the quality of life of the population. In mid 2016 the region has about 50 operational hydropower plants and about 40 sites are under construction or refurbishment. The potential for hydropower development – especially for small-scale plants – is assumed to be large, but exact data were missing in the past.

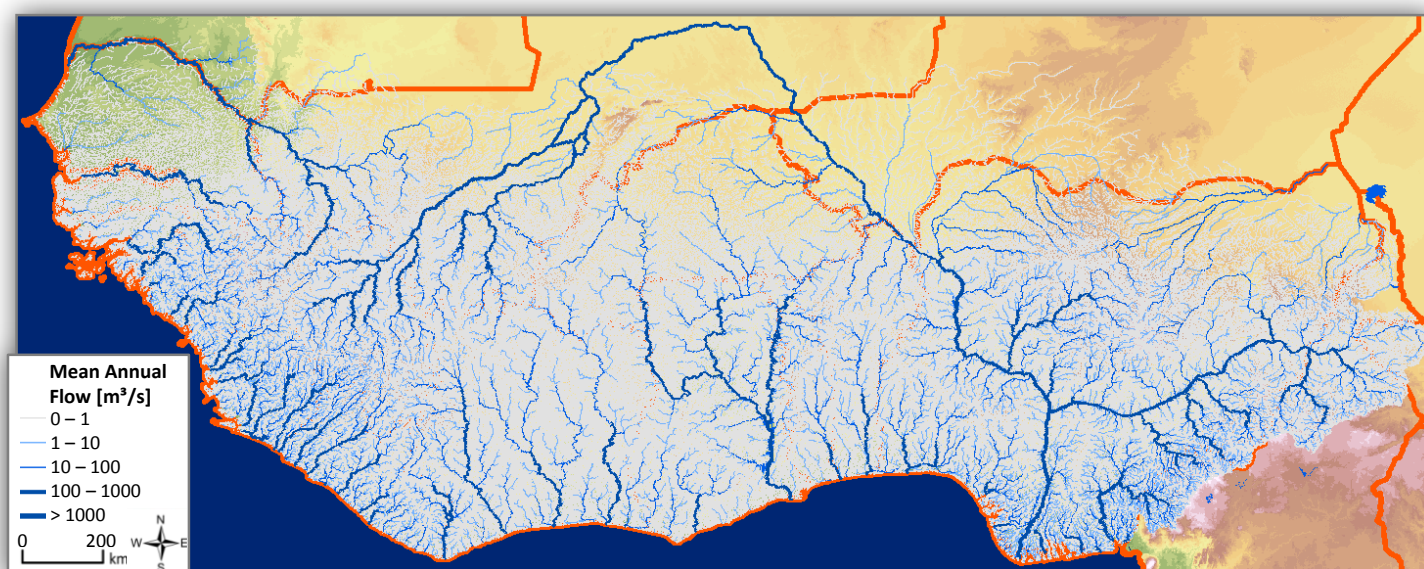
The ECOWAS Centre for Renewable Energy and Energy Efficiency (ECREEE), founded in 2010 by ECOWAS, ADA, AECID and UNIDO, responded to these challenges and developed the ECOWAS Small-Scale Hydropower Program, which was approved by ECOWAS Energy Ministers in 2012. In the frame of this program ECREEE assigned Pöyry Energy GmbH in 2015 for implementation of a hydropower resource mapping by use of Geographic Information Systems (GIS) for 14 ECOWAS member countries (excluding Cabo Verde). The main deliverable of the project is a complete and comprehensive assessment of the hydro resources and computation of hydropower potentials as well as possible climate change impacts for West Africa. Main deliverables of the GIS mapping include:

- River network layer: GIS line layer showing the river network for about 500,000 river reaches (see river network map below) with attributes including river name (if available), theoretical hydropower potential, elevation at start and end of reach, mean annual discharge, mean monthly discharge, etc.
- Sub-catchment layer: GIS polygon layer showing about 1000 sub-catchments with a size of roughly 3000 km<sup>2</sup>. This layer summarizes the data of all river reaches located within the sub-catchment.

Hydropower plants are investments with a lifetime of several decades. Therefore, possible impacts of climate change on future discharge were incorporated into the river network and sub-catchment GIS layers. The GIS layers are available in the ECREEE Observatory for Renewable Energy and Energy Efficiency ([www.ecowrex.org](http://www.ecowrex.org)).

This report summarizes the results of the GIS layers for Burkina Faso and includes:

- General information
- Climate
- Hydrology
- Hydropower potential
- Climate change



## GENERAL INFORMATION

Burkina Faso is a medium-sized country in West Africa and has about 18 Mio inhabitants. The capital of Burkina Faso is Ouagadougou. The neighboring countries are Mali in the north, Niger in the east, Benin in the south-east, as well as Togo, Ghana and Côte d'Ivoire in the south (see map below).

Hydropower currently plays a small role for energy generation in Burkina Faso. There are five existing small hydropower plants, but there are no medium or large hydropower plants (see table below).

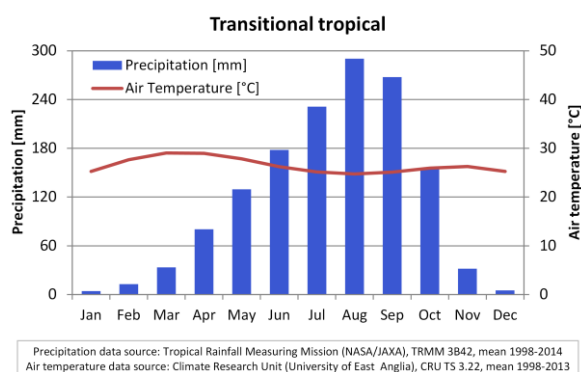
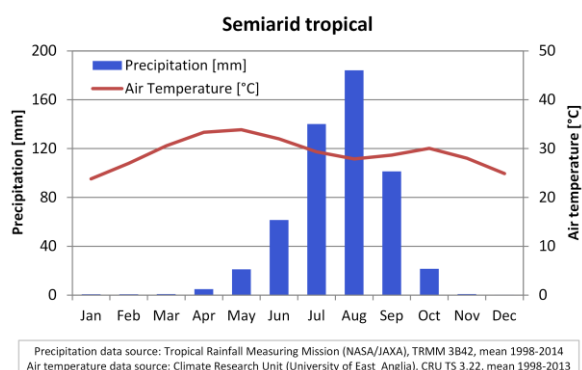
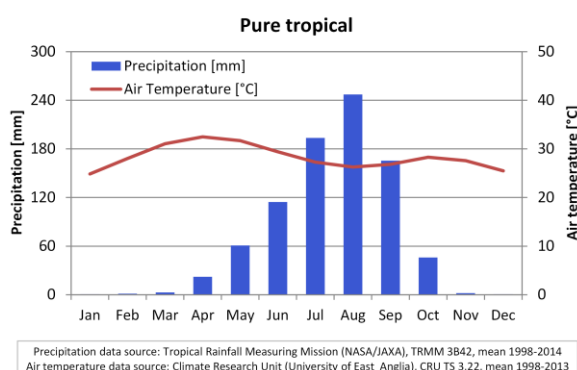
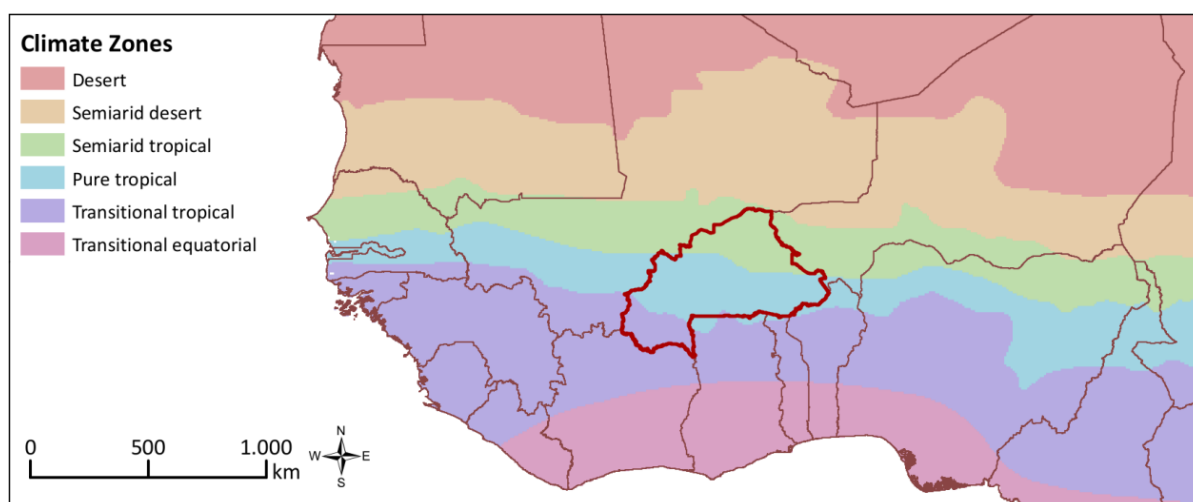


General Information for Burkina Faso	
Inhabitants (2014)	17.6 Mio.
Area (2014)	274,222 km <sup>2</sup>
GDP per capita (2014)	713 USD
Electrification rate total/urban/rural (2013)	17/56/2 %
Hydro installed capacity (2013)	32 MW
Electricity generation (2014)	870 GWh
Electricity generation from hydropower (2014)	96 GWh
Number of existing hydropower plants with installed capacity > 1 MW (2016)	5
Number of existing small hydropower plants with installed capacity 1-30 MW (2016)	5
Number of existing medium hydropower plants with installed capacity 30-100 MW (2016)	0
Number of existing large hydropower plants with installed capacity >100 MW (2016)	0

Source: ECOWAS Country Profiles ([www.ecowrex.org](http://www.ecowrex.org))  
Reference year given in brackets.

## CLIMATE

The climate in West Africa can be grouped into six zones with distinctive seasonal rainfall patterns (L'Hôte et al., 1996). In Burkina Faso the climate ranges from “Transitional tropical” in the south, over “Pure tropical” in the central parts, to “Semi-arid tropical” in the north. The diagrams below summarize the mean monthly rainfall and air temperature in these climate zones.



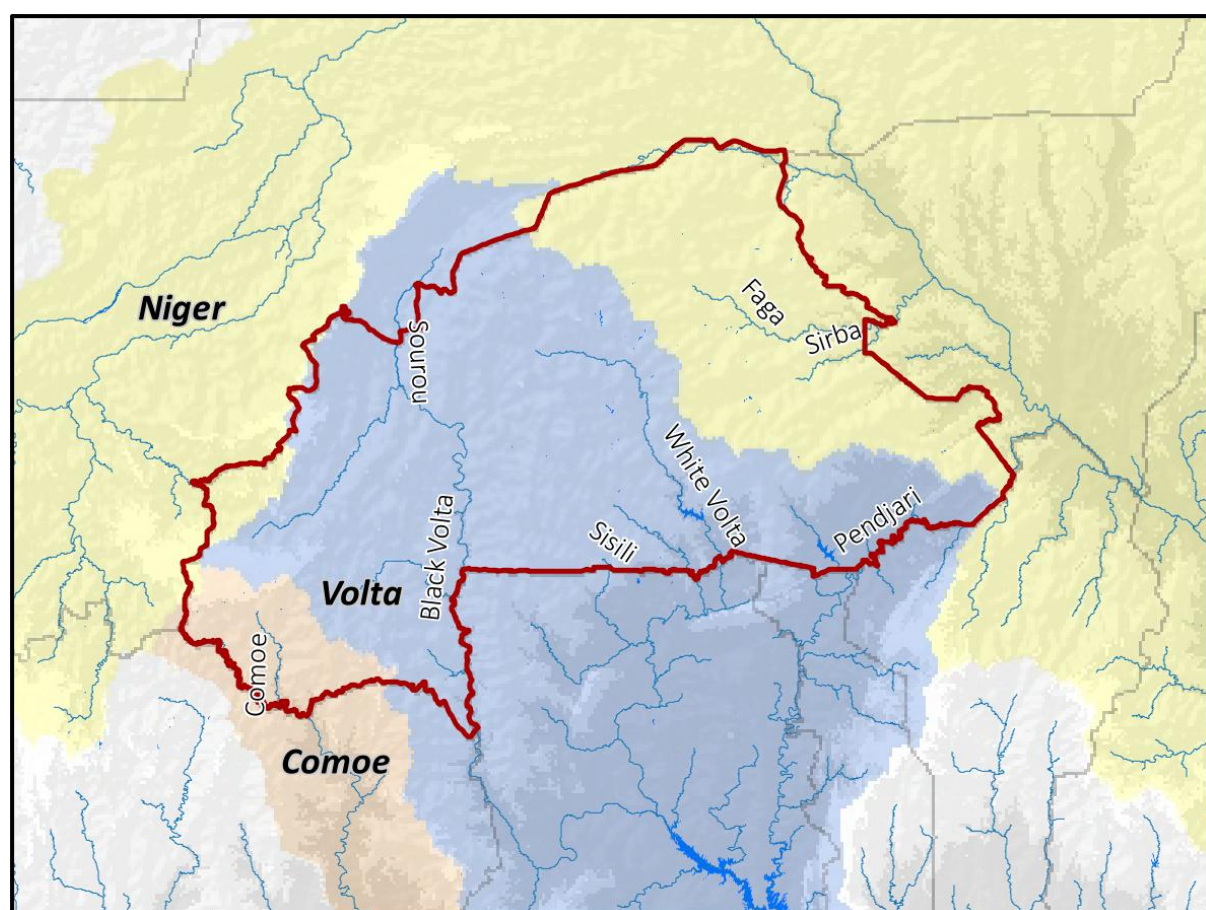
## HYDROLOGY

Most of the country is located in the Volta basin (overall 63%), which includes the major rivers of Black Volta and White Volta that discharge to the south into Ghana. Rivers in the eastern part of the country discharge to the east and are tributaries of the Niger River. Overall 31 % of the country is located in the Niger basin. The extreme south-west of Burkina Faso forms the headwater region of the Comoe basin (see map and table below).

The figures on the following page illustrate the annual and seasonal variations in discharge for the Comoe River, the Black Volta River and White Volta River.

All three rivers show strong variations in annual discharge over the last 60 years. Some extremely dry years occurred in the 1980s, whereas the period 1998-2014 represents moderately wet conditions in the historic context.

There is strong seasonality in discharge, with high flows during the rainy season and impact of flood routing (Black Volta). Flow is very low during the dry season.



### Basins

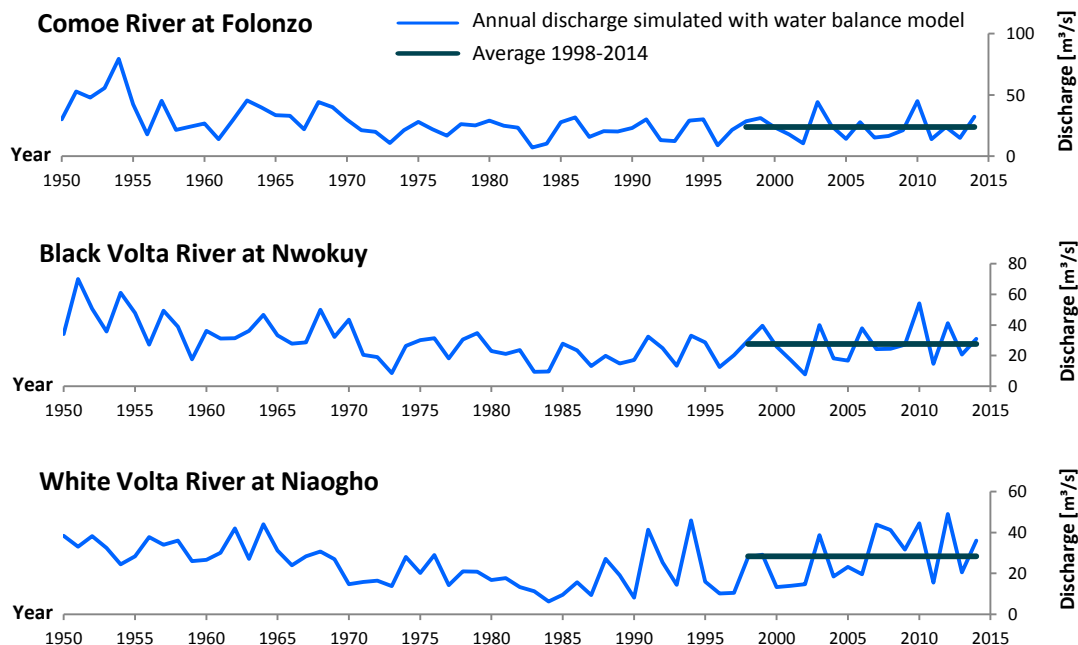
	Comoe		Main Rivers
	Niger		Reservoirs
	Volta		Country borders

### Percentage of country's area located in different river basins

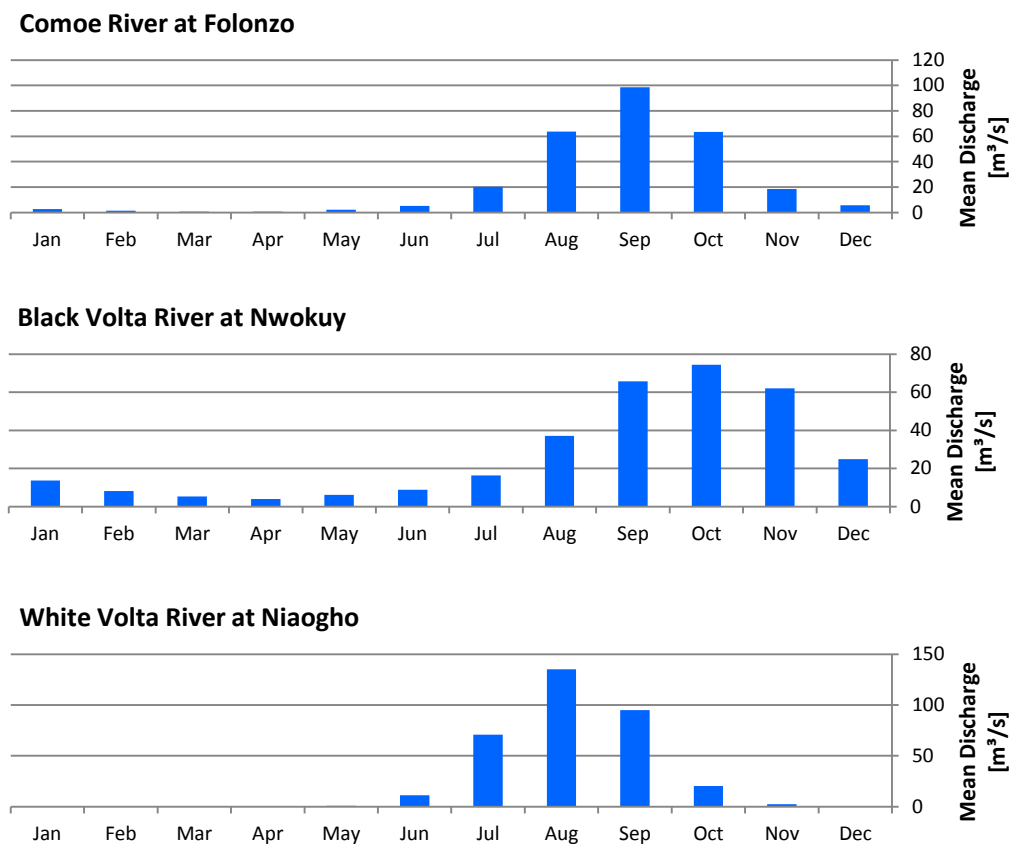
Comoe basin	6.5 %
Niger basin	31.0 %
Volta basin	62.5 %



## Historic Variation in Annual Discharge



## Seasonality in Discharge





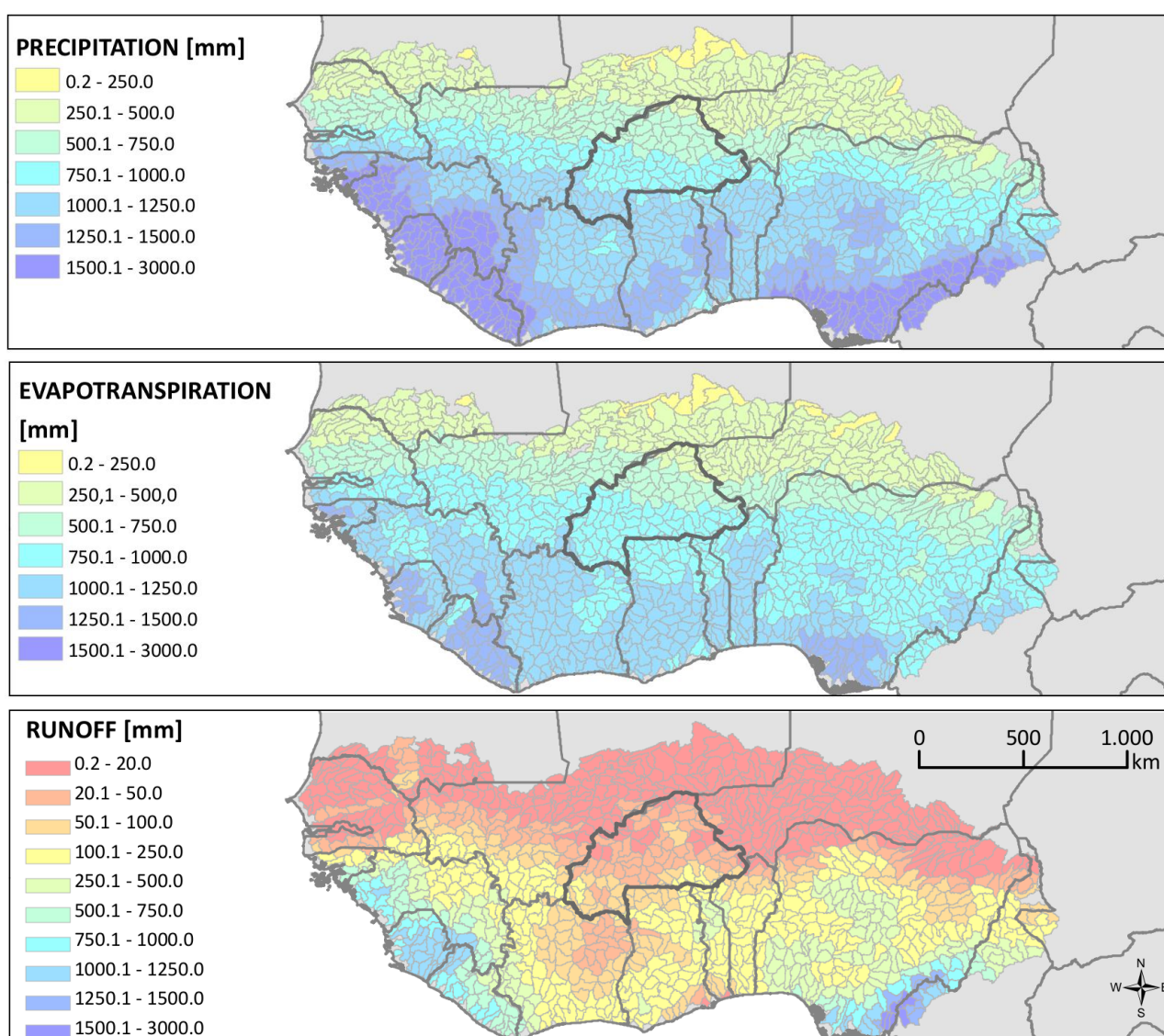
## Annual Water Balance

The long-term mean annual water balance describes the partitioning of precipitation (rainfall) into actual evapotranspiration (transpiration by plants, evaporation from soil) and runoff, as over long time periods the change in storage (soil moisture, ground water) can be assumed to be negligible for the mean annual water balance.

The regional distribution of the water balance components in West Africa is strongly controlled by spatial variations in mean annual precipitation. An annual water balance model calibrated with observed discharge data of 400 gauges was used to determine mean annual actual evapotranspiration and runoff for the period 1998-2014, as shown in the maps below. In most parts of West Africa mean annual actual evapotranspiration is considerably larger than mean annual runoff.

This is also the case for the mean annual water balance in Burkina Faso. In the southern parts of the country about 90 % of rainfall is lost via evapotranspiration and only about 10 % of rainfall generates runoff. This is even more extreme in the northern parts of the country, where about 97 % of rainfall is lost via evapotranspiration and only about 3 % of rainfall generates runoff.

Mean annual discharge is computed by aggregating runoff along the river network, which together with channel slope determines the hydropower potential (see next section).



## HYDROPOWER POTENTIAL

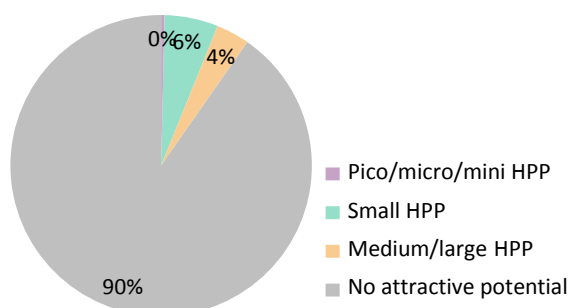
The theoretical hydropower potential of a river is defined as the amount of power that would be produced if the full head of the river was used and if 100 % of the mean annual discharge was turbinated (i.e. no spillway losses or environmental flow constraints). In this study overall plant efficiency (turbines, hydraulic losses) is assumed with 87 %.

The theoretical hydropower potential for Burkina Faso is estimated to be 271 MW (reference period 1998-2014), which is the total of all rivers in the country.

The following table and figure show how the total potential of the country is subdivided into theoretical potential for hydropower plants (HPP) of different plant size. A classification scheme based on mean annual discharge (m<sup>3</sup>/s) and specific hydropower potential (MW/km) was applied to determine the preferred plant size for river reaches with a typical length of 1 to 10 km. Four classes were considered for the preferred plant size, including pico/micro/mini HPP (< 1 MW installed capacity), small HPP (1-30 MW installed capacity), medium/large HPP (> 30 MW installed capacity), and “No attractive potential” for river reaches with too low specific hydropower potential. For the latter in some cases it may still be worthwhile to utilize this potential in e.g. multi-purpose schemes.

In Burkina Faso the theoretical hydropower potential of most river reaches is classified as “No attractive potential”. However, there is some theoretical potential for small HPP. The technical potential was not assessed in this study.

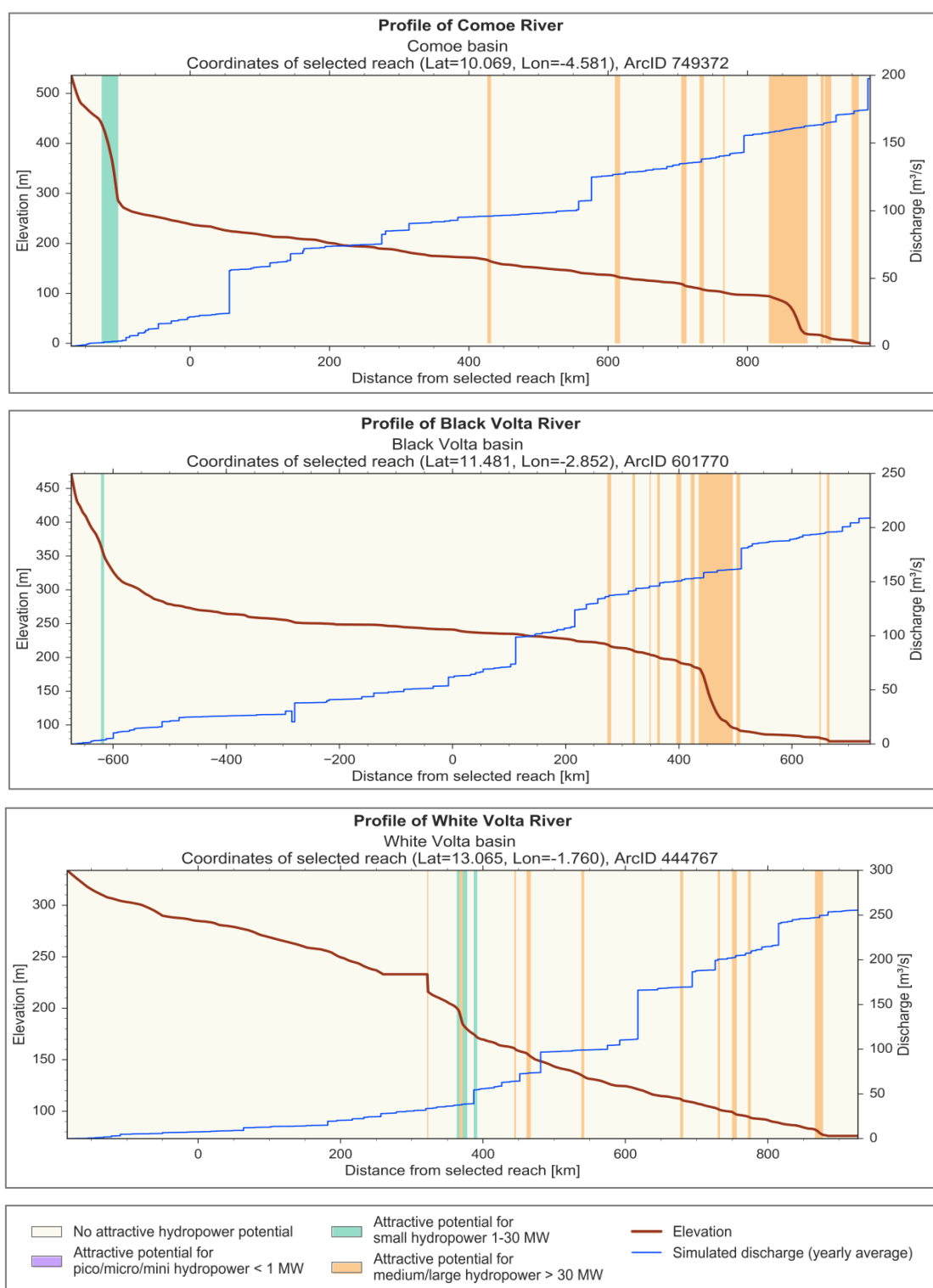
**Theoretical Hydropower Potential  
Burkina Faso: 271 MW**



Theoretical Hydropower Potential of Rivers in Burkina Faso	
Pico/micro/mini HPP	1 MW
Small HPP	16 MW
Medium/large HPP	10 MW
No attractive potential	244 MW
Total of all rivers in country	271 MW
Total of rivers with attractive theoretical potential for pico/micro/mini, small, or medium/large HPP	27 MW

## Longitudinal Profiles of Selected Rivers

The following graphs show longitudinal profiles of the Comoe, Black Volta and White Volta rivers, plotting elevation (red) and mean annual discharge (blue) from the source to the mouth of the river. Inflow from tributaries is clearly identifiable as sudden increase in river discharge. In the longitudinal profile of the White Volta the Bagre reservoir is identifiable by horizontal elevation in the reservoir lake and sudden drop of elevation at the dam site. The background color indicates if a river reach has an attractive theoretical hydropower potential for pico/micro/mini HPP (< 1 MW installed capacity), small HPP (1-30 MW installed capacity), or medium/large HPP (> 30 MW installed capacity).

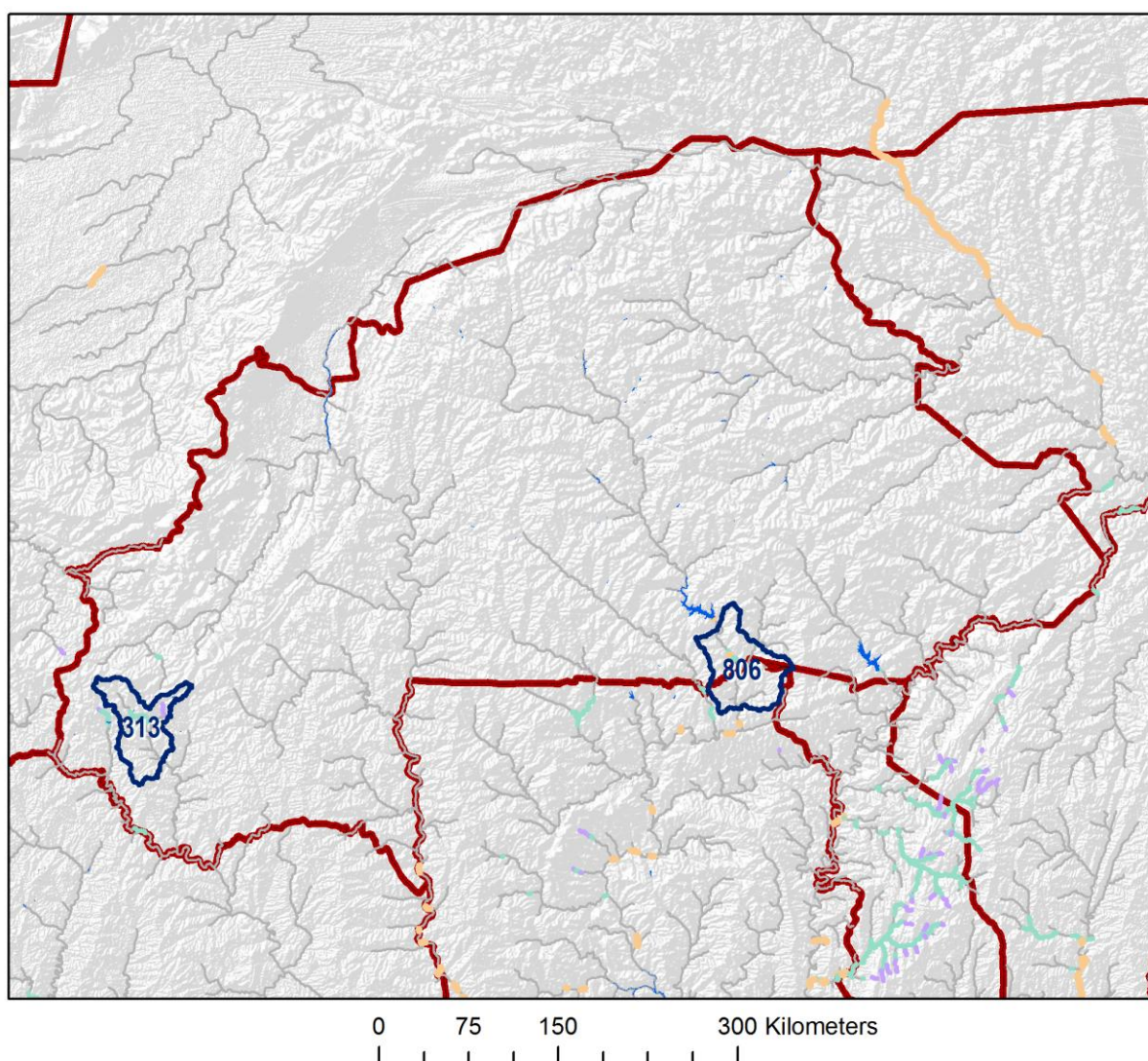




## Hydropower Potential in Selected Sub-catchments

The maps and tables on the next page give information about the theoretical hydropower potential of selected sub-catchments in Burkina Faso. Sub-catchments with attractive theoretical hydropower potential of river reaches are found in the south-west and south of Burkina Faso.

The table data summarizes the total theoretical hydropower potential of all river reaches within the sub-catchment. River reaches were grouped according to preferred plant size for pico/micro/mini HPP (< 1 MW installed capacity), small HPP (1-30 MW installed capacity), or medium/large HPP (> 30 MW installed capacity). Similarly, the color code of the river network displayed in the maps indicates the preferred plant size. A grey color indicates no attractive potential for hydropower development.



### River network showing preferred hydropower plant size

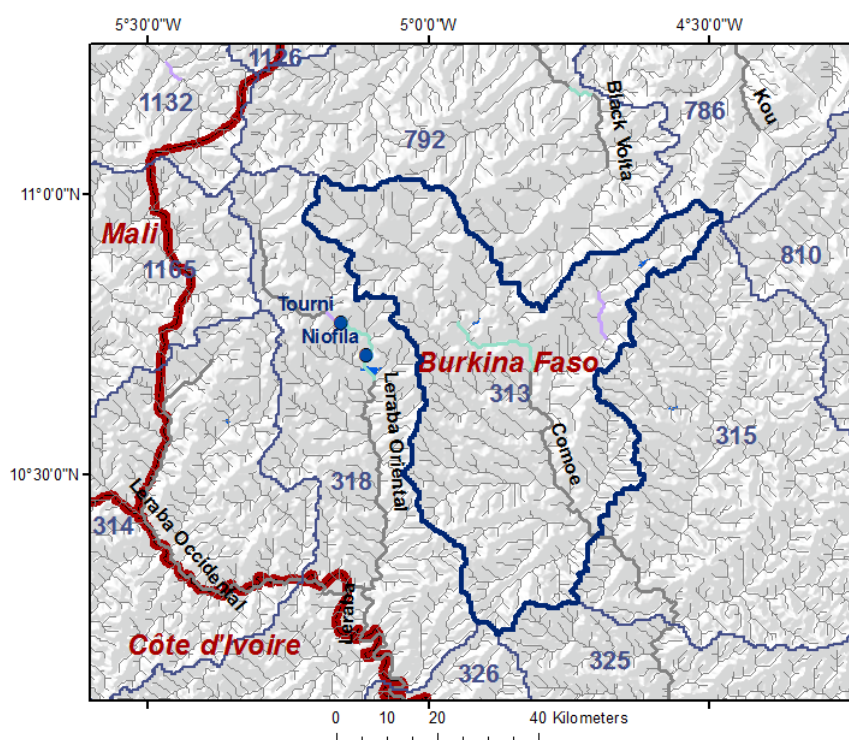
- Pico/micro/mini HPP
- Small HPP
- Medium/large HPP

### Map overlays

- Selected sub-catchments with ID number
- Lake or reservoir
- Country border



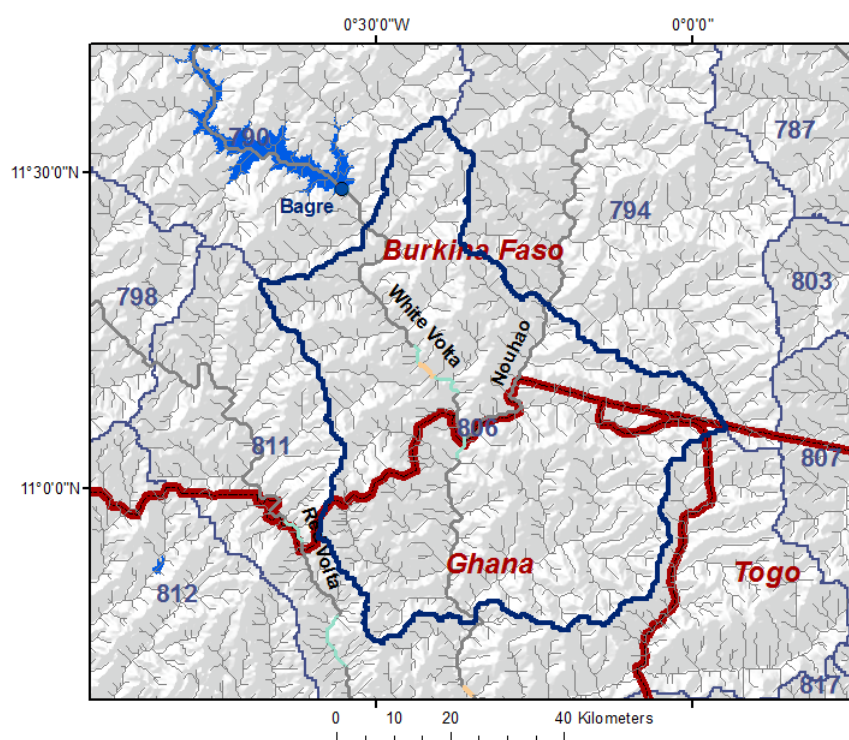




#### Theoretical Hydropower Potential of Rivers in Sub-Catchment #313

Pico/micro/mini HPP	0.8 MW
Small HPP	4.2 MW
Medium/large HPP	0 MW

This sub-catchment is in the headwater region of the Comoe River, which is located in the south-west of Burkina Faso not far from the borders with Mali and Côte d'Ivoire. There is some theoretical potential for pico/micro/mini HPP and small HPP. Tourni and Niofila hydropower plants are located west of the sub-catchment.



#### Theoretical Hydropower Potential of Rivers in Sub-Catchment #806

Pico/micro/mini HPP	0 MW
Small HPP	4.6 MW
Medium/large HPP	3.2 MW

This sub-catchment of the White Volta River is located in the south-east of Burkina Faso, downstream of the Bagre dam. The sub-catchment is shared with Ghana. Just before the border there is some potential for small HPP.

#### River network showing preferred hydropower plant size

- Pico/micro/mini HPP
- Small HPP
- Medium/large HPP
- No attractive potential

#### Map overlays

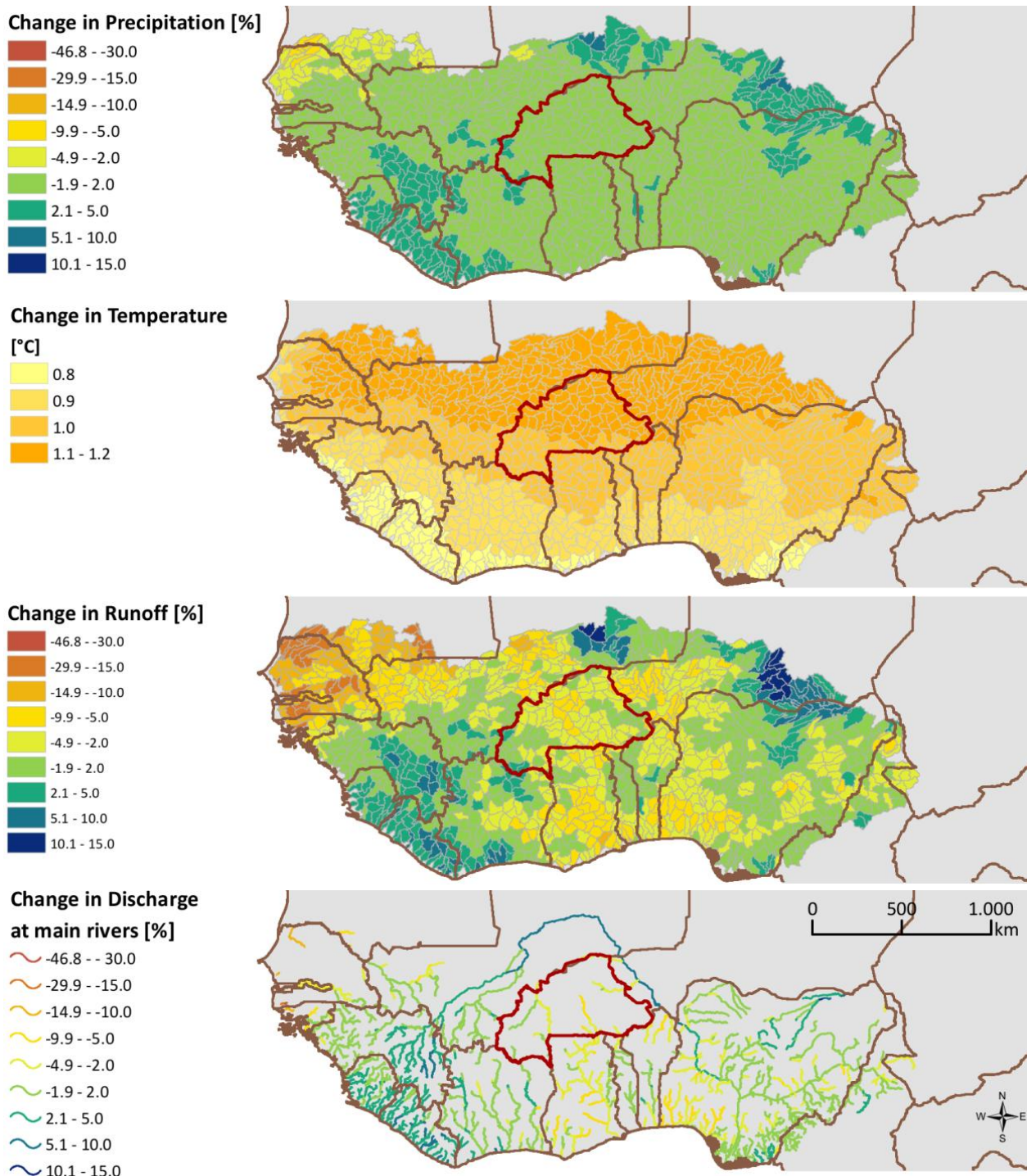
- Existing hydropower plant
- Lake or reservoir
- Sub-catchment boundary
- Country border



## CLIMATE CHANGE

Climate change may have considerable impact on future water resources and thus hydropower generation. The following figures show an assessment of climate change projections for West Africa based on 15 Regional Climate Models of the CORDEX-Africa ensemble. Two Representative Concentration Pathways (RCP4.5 and RCP8.5) were considered, thus yielding a total of 30 climate model runs. Future runoff was simulated by driving a water balance model with precipitation and temperature climate change signals with respect to the reference period 1998-2014.

### Projections for the Near Future 2026-2045

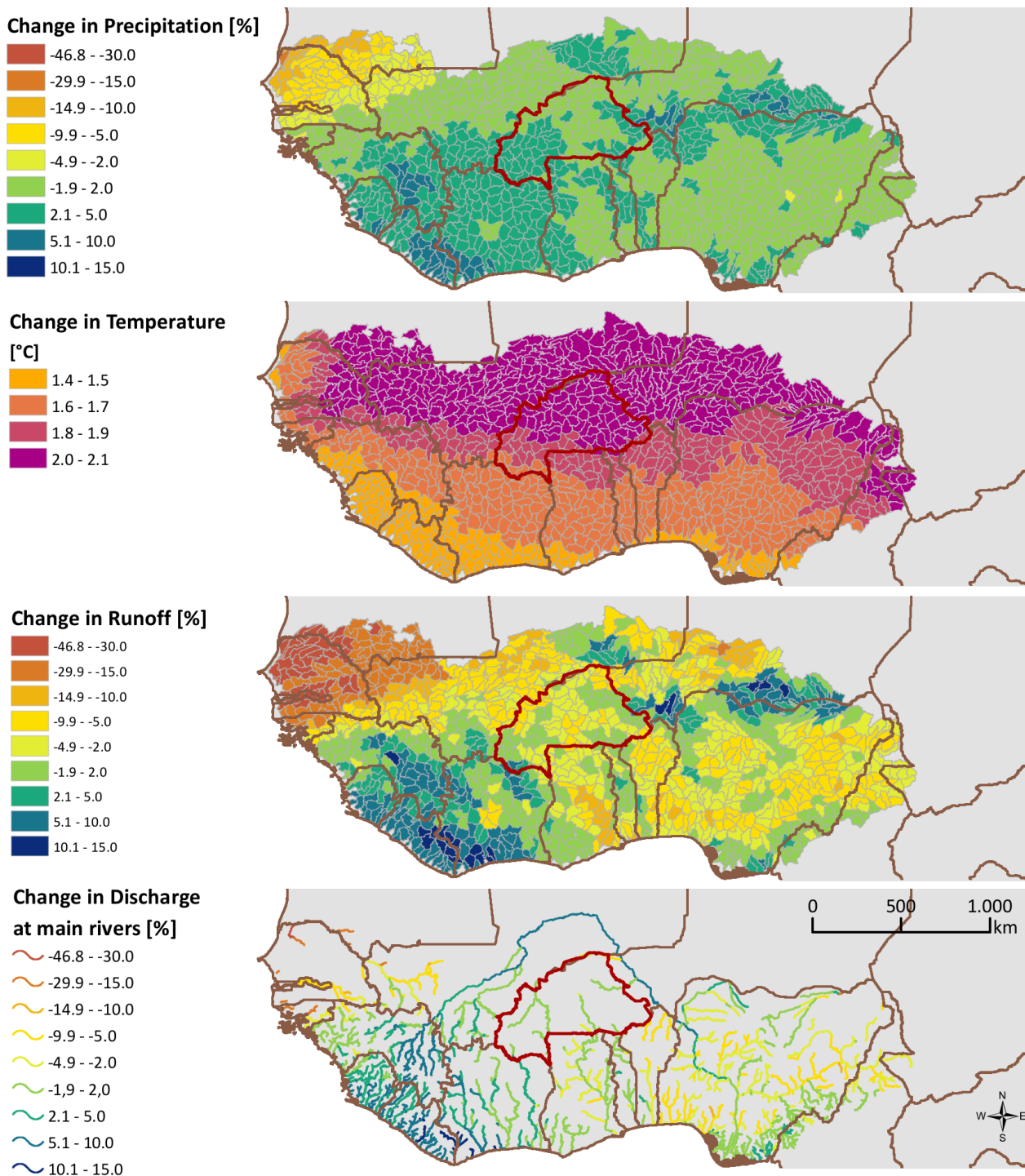




## Projections for the Far Future 2046-2065

The maps below show the expected impact of climate change on future mean annual water resources. From the 30 climate model runs the median result was computed to generate the maps, which show change signals comparing the future periods 2026-2045 (previous page) and 2046-2065 (this page) vs. the reference period 1998-2014.

In large parts of West Africa increase or almost no change is projected for future precipitation. This is also the case for Burkina Faso. The combined effects of future precipitation and considerable warming (which affects evapotranspiration) were simulated with a water balance model to compute future runoff. In Burkina Faso no considerable change is projected for future runoff (median of 30 model runs). The same applies to river discharge.



## Projected Change in Discharge for Selected Gauges

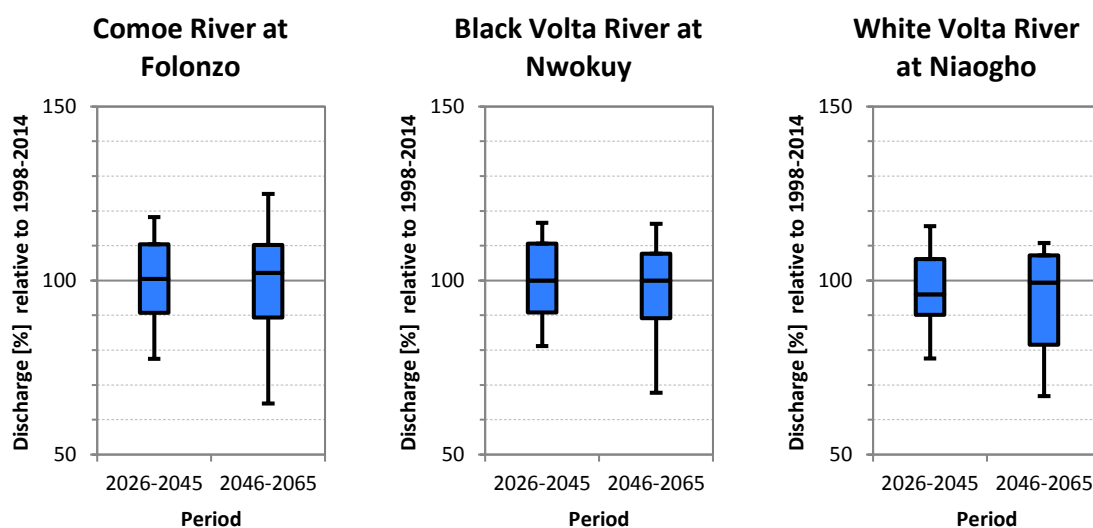
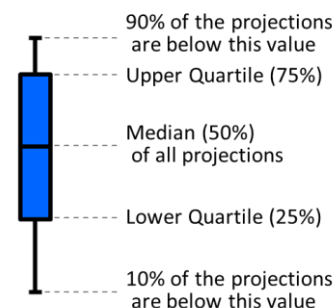
Future mean annual discharge was estimated with data from 30 different climate model runs. Boxplots are presented to summarize the spread in the simulation results (see explanation at right).

For rivers in Burkina Faso the uncertainty in the climate model projections is rather high, as both increase and decrease is projected by different climate models for the same river.

For the Comoe, Black Volta and White Volta rivers climate projections disagree if there will be an increase or decrease in discharge. The median of all climate model runs results in almost zero change in future discharge.

Overall the climate change impact assessment shows that given the projections with the most detailed climate models currently available (CORDEX-Africa) there is no clear signal for pronounced changes in future. This means that climate change is not a 'worst-case' scenario for future availability of river discharge.

**Boxplot summarizing projections with 30 climate model runs**





## ACKNOWLEDGEMENTS

This study was conducted by Pöyry Energy GmbH (Vienna, Austria) for the ECOWAS Centre for Renewable Energy and Energy Efficiency (ECREEE, Praia, Cabo Verde). This is a contribution to the ECOWAS Small-Scale Hydro Power Program, which aims to develop the small-scale hydropower sector in West Africa and is funded by the Austrian Development Agency (ADA) and the Spanish Agency for International Development Cooperation (AECID).

Observed discharge data were used for hydrological model calibration and were obtained from the following sources: Global Runoff Data Centre (GRDC), Volta Basin Authority, Niger Basin Authority, Senegal & Gambia Basin Authorities (OMVS, OMVG), Liberia National Hydrological Service, Sierra Leone National Hydrological Service, Japan International Cooperation Agency (JICA).

Precipitation data 1998-2014 are based on Tropical Rainfall Measurement Mission (TRMM 3B42 v7). Additional precipitation data 1950-2010 for model calibration were obtained from the Global Precipitation Climatology Centre (GPCC). Air temperature and potential evapotranspiration data were obtained from the Climatic Research Unit (CRU, Univ. East Anglia), with additional data from the CLIMWAT database of FAO. River network and elevation data were derived from the Hydrosheds dataset (USGS). Climate model data were obtained from the Coordinated Regional Downscaling Experiment for Africa (CORDEX-Africa), which is a project of the World Climate Research Program.

The delineation of climate zones is based on: L'Hôte Y, Dubreuil P, Lericque J. 1996. *Carte des types de climats en Afrique Noire à l'ouest du Congo. Rappels, et extension aux régimes hydrologiques*. In: *L'hydrologie tropicale: géoscience et outil pour le développement* (Actes de la conférence de Paris, mai 1995). IAHS Publ. no. 238, p. 55-65

More information about the general methodology for the GIS hydropower resource mapping is available in: Kling H, Stanzel P, Fuchs M. 2016. *Regional assessment of the hydropower potential of rivers in West Africa*. Energy Procedia, Elsevier, Special Issue of ERE, 8 pp.

