

# THE GAMBIA

## COUNTRY REPORT



**GIS Hydropower Resource  
Mapping and Climate  
Change Scenarios  
for the ECOWAS  
Region**





## Imprint



**Title:** GIS Hydropower Resource Mapping and Climate Change Scenarios for the ECOWAS Region, Country Report for The Gambia

**Publisher:** ECOWAS Centre for Renewable Energy and Energy Efficiency (ECREEE), Praia, Cabo Verde. *All results and maps are published on the ECOWAS Observatory for Renewable Energy and Energy Efficiency - [www.ecowrex.org/smallhydro](http://www.ecowrex.org/smallhydro)*

**Contact:** [info@ecreee.org](mailto:info@ecreee.org)

March 2017

### Program Responsibility:

The ECOWAS Small-Scale Hydropower Program was approved by ECOWAS Energy Ministers in 2012. In the frame of this program ECREEE assigned Pöyry Energy GmbH in 2015 for implementation of a GIS Hydro Resource Mapping and Climate Change Scenarios in ECOWAS countries with Hydropower potentials. One deliverable of this project are 14 country reports summarizing the GIS Hydro Resource mapping and climate change scenarios. The overall methodology background information and lessons learnt of these Country Reports are described in the final report *“GIS Hydropower Resource Mapping and Climate Change Scenarios for the ECOWAS Region - Methodology & Lessons Learnt.”*

[www.ecowrex.org/smallhydro](http://www.ecowrex.org/smallhydro)

### Project Team:



#### Pöyry Energy GmbH, Vienna, Austria

Mr. Harald Kling (project management, team leader hydrology)

Mr. Martin Fuchs (team leader hydropower)

Mr. Philipp Stanzel (team leader climate change)

Ms. Maria Paulin

Mr. Bernhard Wipplinger

Mr. Stefan Wimmer

Ms. Elisabeth Freiberger

Mr. Christoph Libisch

Mr. Raimund Mollner

Mr. Rudolf Faber

Mr. Herbert Weilguni



#### ECOWAS Centre for Renewable Energy and Energy Efficiency, Praia, Cabo Verde

Mr. Mahama Kappiah, Executive Director

Mr. Hannes Bauer, Project Management, Lead hydropower Program

Mr. Daniel Paco, GIS Expert

#### The ECOWAS Small-Scale Hydropower Program is managed by:

ECOWAS Centre for Renewable Energy and Energy Efficiency (ECREEE)

Mr. Hannes Bauer, ECREEE

Contact: [info@ecreee.org](mailto:info@ecreee.org)

### Project Funding



Austrian Development Cooperation – ADC

Spanish Ministry of External Affairs and Cooperation - AECID

## PREFACE

The 15 countries of the Economic Community of West African States (ECOWAS) face a constant shortage of energy supply, which has negative impacts on social and economic development, including also strongly the quality of life of the population. In mid 2016 the region has about 50 operational hydropower plants and about 40 sites are under construction or refurbishment. The potential for hydropower development – especially for small-scale plants – is assumed to be large, but exact data were missing in the past.

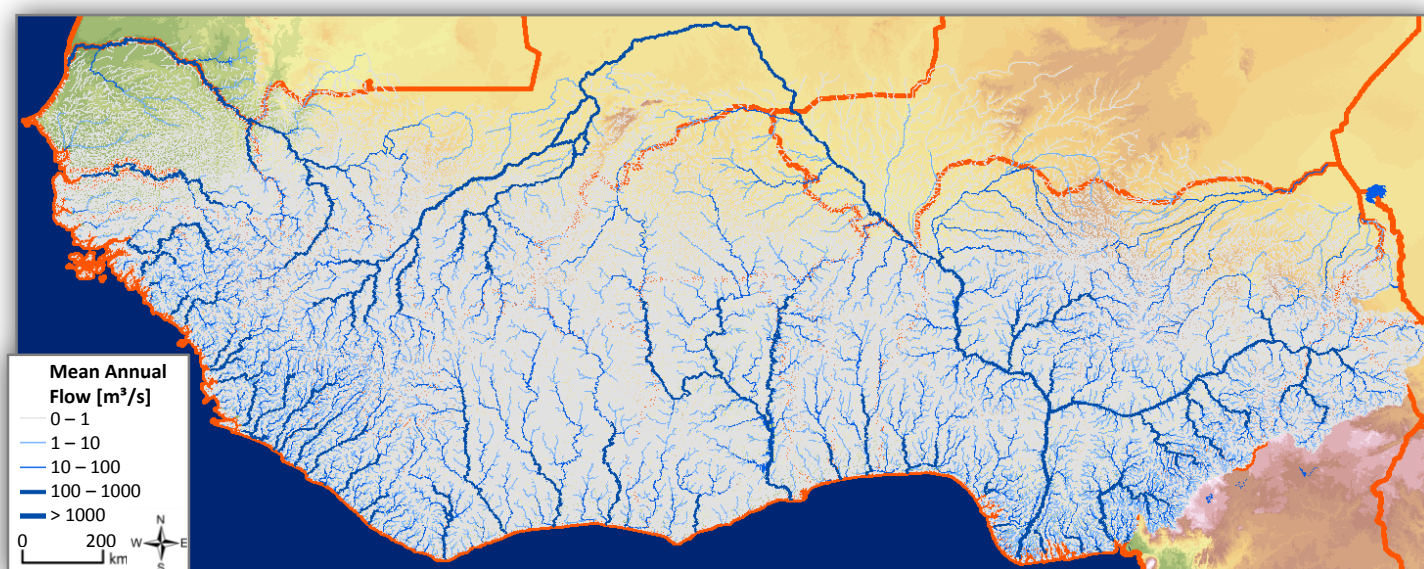
The ECOWAS Centre for Renewable Energy and Energy Efficiency (ECREEE), founded in 2010 by ECOWAS, ADA, AECID and UNIDO, responded to these challenges and developed the ECOWAS Small-Scale Hydropower Program, which was approved by ECOWAS Energy Ministers in 2012. In the frame of this program ECREEE assigned Pöyry Energy GmbH in 2015 for implementation of a hydropower resource mapping by use of Geographic Information Systems (GIS) for 14 ECOWAS member countries (excluding Cabo Verde). The main deliverable of the project is a complete and comprehensive assessment of the hydro resources and computation of hydropower potentials as well as possible climate change impacts for West Africa. Main deliverables of the GIS mapping include:

- River network layer: GIS line layer showing the river network for about 500,000 river reaches (see river network map below) with attributes including river name (if available), theoretical hydropower potential, elevation at start and end of reach, mean annual discharge, mean monthly discharge, etc.
- Sub-catchment layer: GIS polygon layer showing about 1000 sub-catchments with a size of roughly 3000 km<sup>2</sup>. This layer summarizes the data of all river reaches located within the sub-catchment.

Hydropower plants are investments with a lifetime of several decades. Therefore, possible impacts of climate change on future discharge were incorporated into the river network and sub-catchment GIS layers. The GIS layers are available in the ECREEE Observatory for Renewable Energy and Energy Efficiency ([www.ecowrex.org](http://www.ecowrex.org)).

This report summarizes the results of the GIS layers for The Gambia and includes:

- General information
- Climate
- Hydrology
- Hydropower potential
- Climate change



## GENERAL INFORMATION

The Gambia is one of the smaller countries in West Africa and has 2 Mio inhabitants. The capital of The Gambia is the coastal city of Banjul. The neighboring country of The Gambia is the Republic of Senegal (see map below).

Hydropower plays no role for energy generation in The Gambia, as there are no existing hydropower plants in the country.

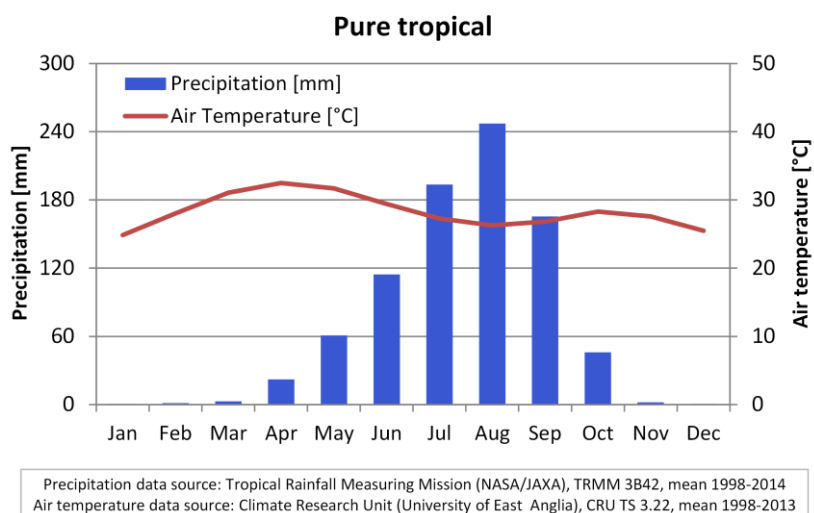
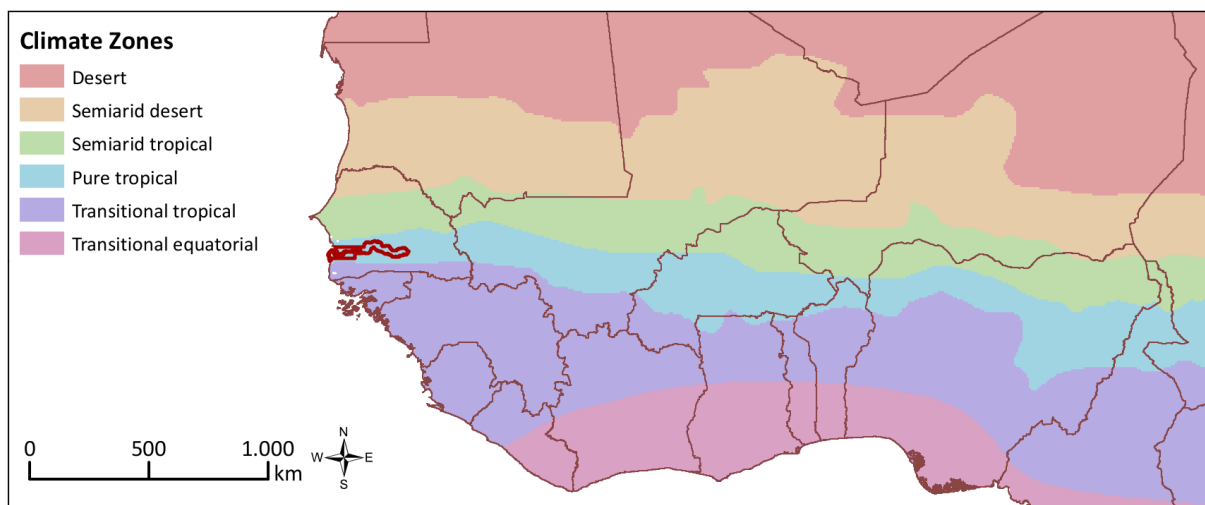


General Information for The Gambia	
Inhabitants (2014)	1.9 Mio.
Area (2014)	11,300 km <sup>2</sup>
GDP per capita (2014)	502 USD
Electrification rate total/urban/rural (2012)	31/39/18 %
Hydro installed capacity (2014)	0 MW
Electricity generation (2012)	232 GWh
Electricity generation from hydropower (2012)	0 GWh
Number of existing hydropower plants with installed capacity > 1 MW (2016)	0
Number of existing small hydropower plants with installed capacity 1-30 MW (2016)	0
Number of existing medium hydropower plants with installed capacity 30-100 MW (2016)	0
Number of existing large hydropower plants with installed capacity >100 MW (2016)	0

Source: ECOWAS Country Profiles ([www.ecowrex.org](http://www.ecowrex.org))  
Reference year given in brackets.

# CLIMATE

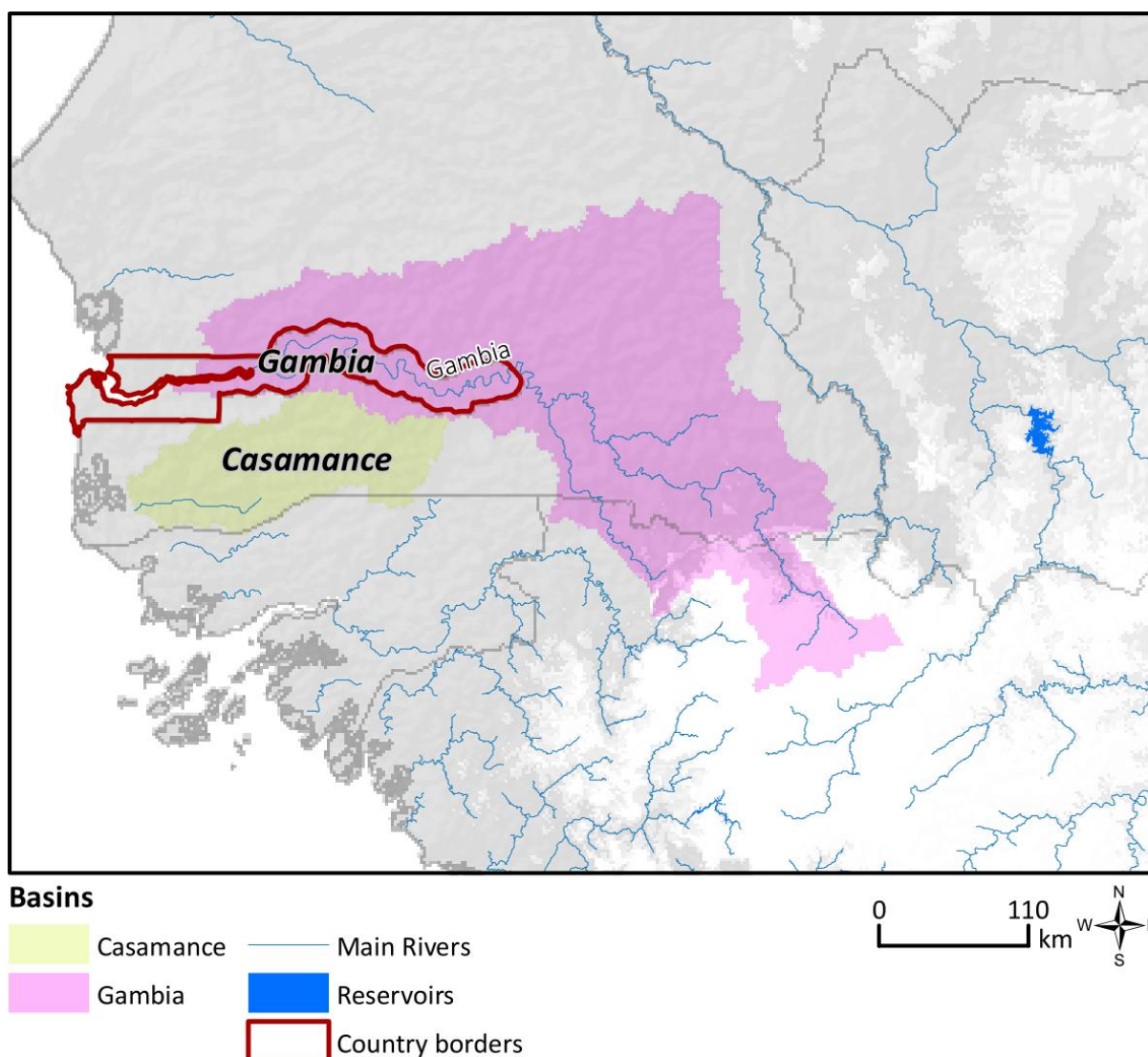
The climate in West Africa can be grouped into six zones with distinctive seasonal rainfall patterns (L’Hôte et al., 1996). The Gambia is entirely located in the “Pure tropical” climate zone with one distinctive rainy season with high rainfall amounts between July and September, which is controlled by the seasonal movement of the Inter Tropical Convergence Zone (ITCZ). Air temperature is highest in April before the start of the rainy season. After the rainy season in October there is a secondary peak in air temperature, whereas December and January are the coldest months of the year. The diagram below summarizes the mean monthly rainfall and air temperature in the Pure tropical climate zone.



## HYDROLOGY

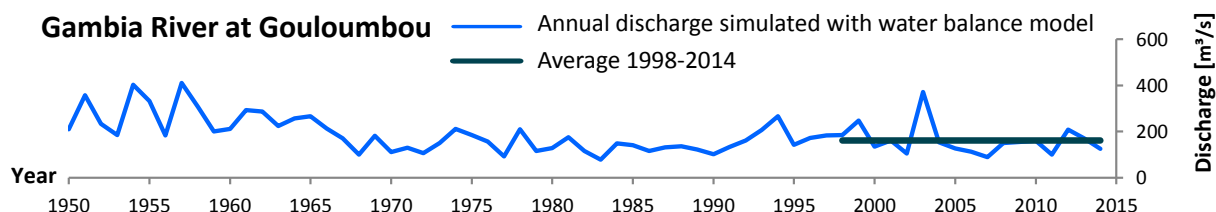
The Gambia is situated on either side of the Gambia River, the nation's namesake. About two thirds of the country is located within the Gambia River basin, whereas flat coastal areas are outside of the Gambia basin. The Gambia River has its headwaters in the Fouta Djallon highlands in Guinea from where it flows in north-western direction through Senegal before entering The Gambia where it flows towards the west and discharges into the Atlantic Ocean.

The figures on the following page illustrate the annual and seasonal variations in discharge for the Gambia River.



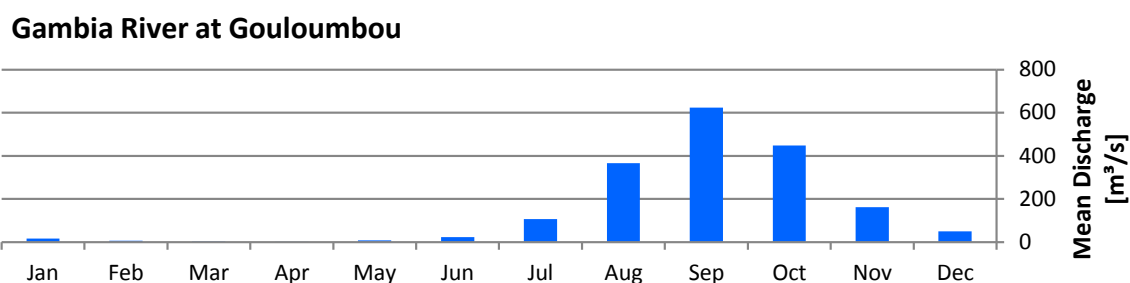
## Historic Variation in Annual Discharge

Discharge of the Gambia River shows strong annual variations over the last 60 years. The 1950s and 1960s had high flows, whereas the 1970s and 1980s were rather dry. Flows in the recent period 1998-2014 were slightly higher than in the preceding decades.



## Seasonality in Discharge

The Gambia River exhibits strong seasonality in discharge, with high flows from August to October during and immediately after the rainy season. Flow is extremely low between January and June.





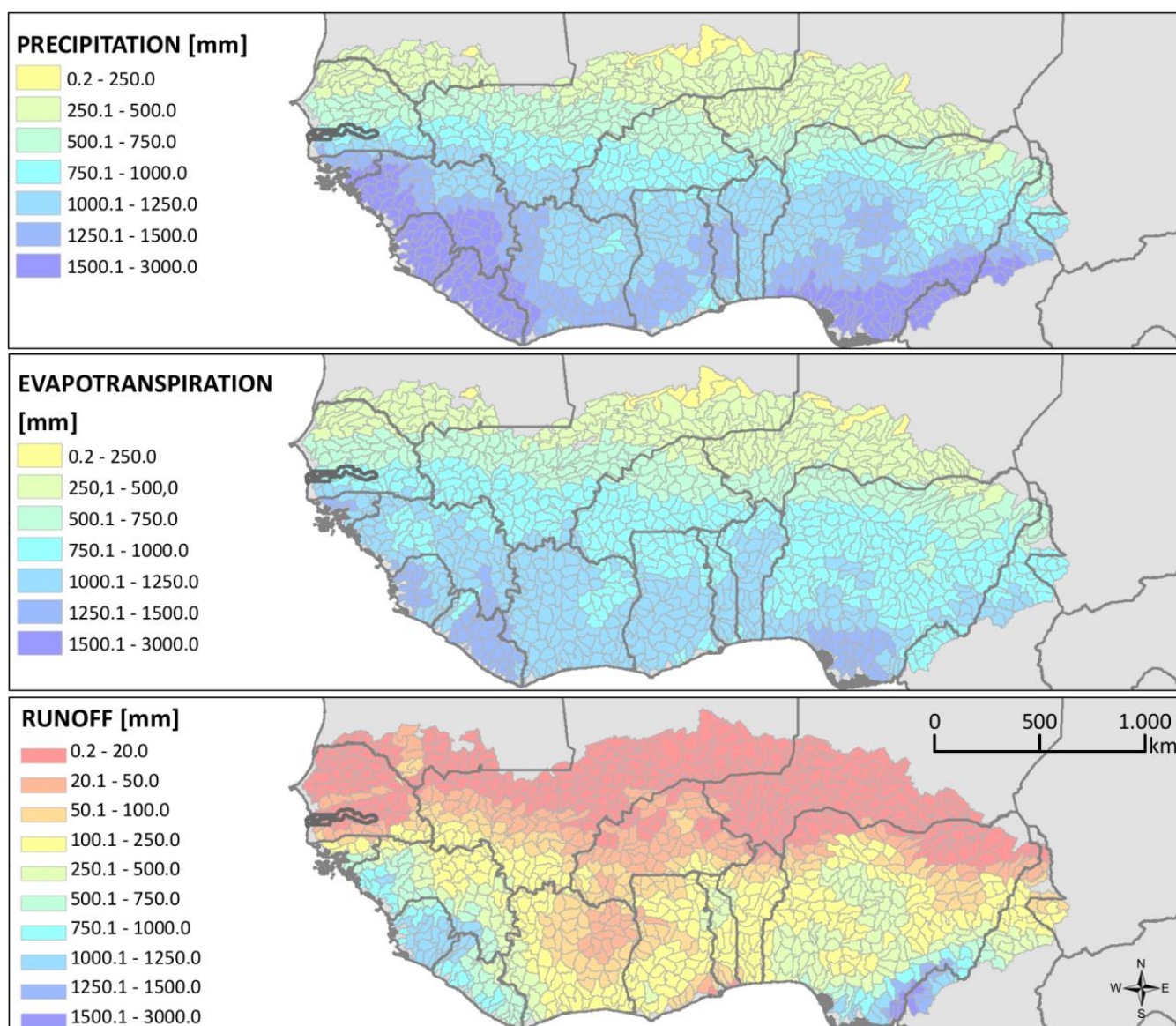
## Annual Water Balance

The long-term mean annual water balance describes the partitioning of precipitation (rainfall) into actual evapotranspiration (transpiration by plants, evaporation from soil) and runoff, as over long time periods the change in storage (soil moisture, ground water) can be assumed to be negligible for the mean annual water balance.

The regional distribution of the water balance components in West Africa is strongly controlled by spatial variations in mean annual precipitation. An annual water balance model calibrated with observed discharge data of 400 gauges was used to determine mean annual actual evapotranspiration and runoff for the period 1998-2014, as shown in the maps below. In most parts of West Africa mean annual actual evapotranspiration is considerably larger than mean annual runoff.

This is also the case for the mean annual water balance in The Gambia, where almost all of the rainfall is lost via evapotranspiration and only a small fraction of less than 5 % generates runoff. However, in the headwater regions of the Gambia River in Guinea about 20 % of rainfall generates runoff and 80 % is lost via evapotranspiration.

Mean annual discharge is computed by aggregating runoff along the river network, which together with channel slope determines the hydropower potential (see next section).



## HYDROPOWER POTENTIAL

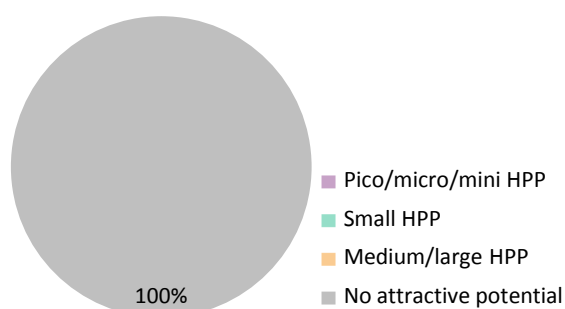
The theoretical hydropower potential of a river is defined as the amount of power that would be produced if the full head of the river was used and if 100 % of the mean annual discharge was turbinated (i.e. no spillway losses or environmental flow constraints). In this study overall plant efficiency (turbines, hydraulic losses) is assumed with 87 %.

The theoretical hydropower potential for The Gambia is estimated to be 10 MW (reference period 1998-2014), which basically is the potential of the Gambia River within the country, as the potential of other small streams is negligible.

The following table and figure show how the total potential of the country is subdivided into theoretical potential for hydropower plants (HPP) of different plant size. A classification scheme based on mean annual discharge (m<sup>3</sup>/s) and specific hydropower potential (MW/km) was applied to determine the preferred plant size for river reaches with a typical length of 1-10 km. Four classes were considered for the preferred plant size, including pico/micro/mini HPP (< 1 MW installed capacity), small HPP (1-30 MW installed capacity), medium/large HPP (> 30 MW installed capacity), and “No attractive potential” for river reaches with too low specific hydropower potential.

It turns out that all of the theoretical hydropower potential in the country is classified as “No attractive potential”.

**Theoretical Hydropower Potential  
The Gambia: 10 MW**

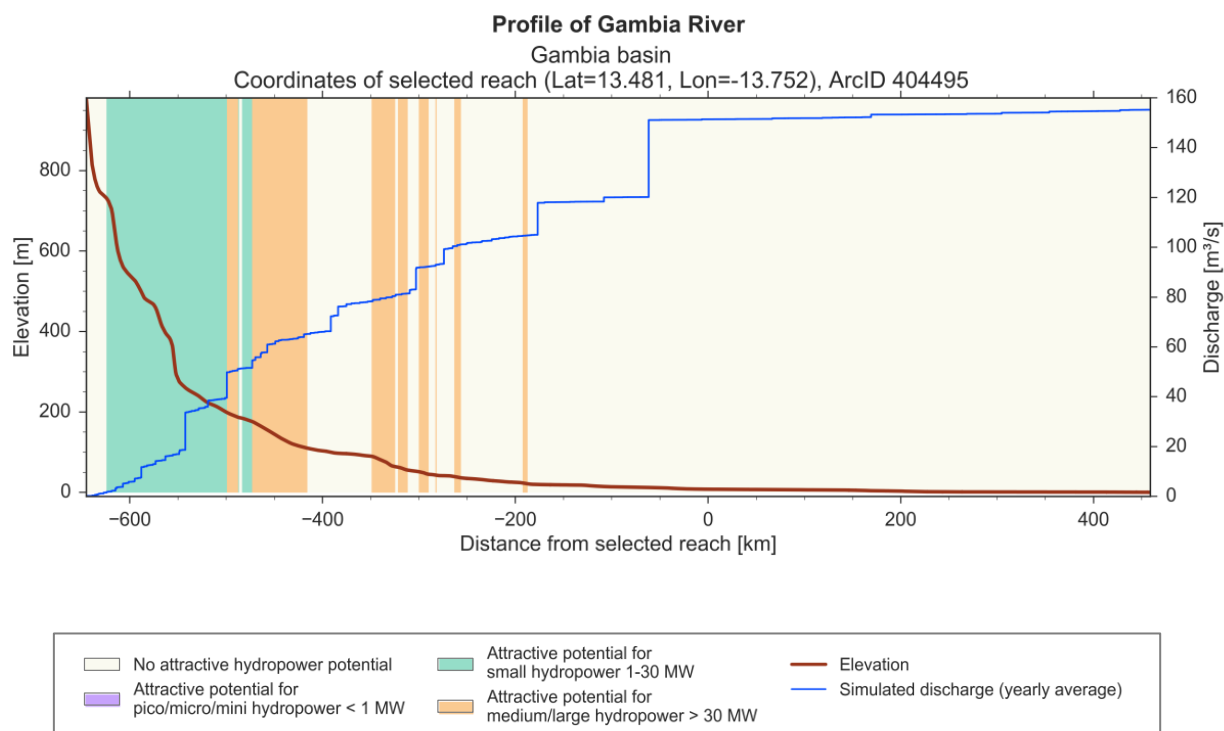


Theoretical Hydropower Potential of Rivers in The Gambia	
Pico/micro/mini HPP	0 MW
Small HPP	0 MW
Medium/large HPP	0 MW
No attractive potential	10 MW
Total of all rivers in country	10 MW
Total of rivers with attractive theoretical potential for pico/micro/mini, small, or medium/large HPP	0 MW

## Longitudinal Profiles of Selected Rivers

The following graph shows the longitudinal profile of the Gambia River, plotting elevation (red) and mean annual discharge (blue) from the source to the mouth of the river. Inflow from tributaries is clearly identifiable as sudden increase in river discharge. The background color indicates if a river reach has an attractive hydropower potential for pico/micro/mini HPP (< 1 MW installed capacity), small HPP (1-30 MW installed capacity), or medium/large HPP (> 30 MW installed capacity).

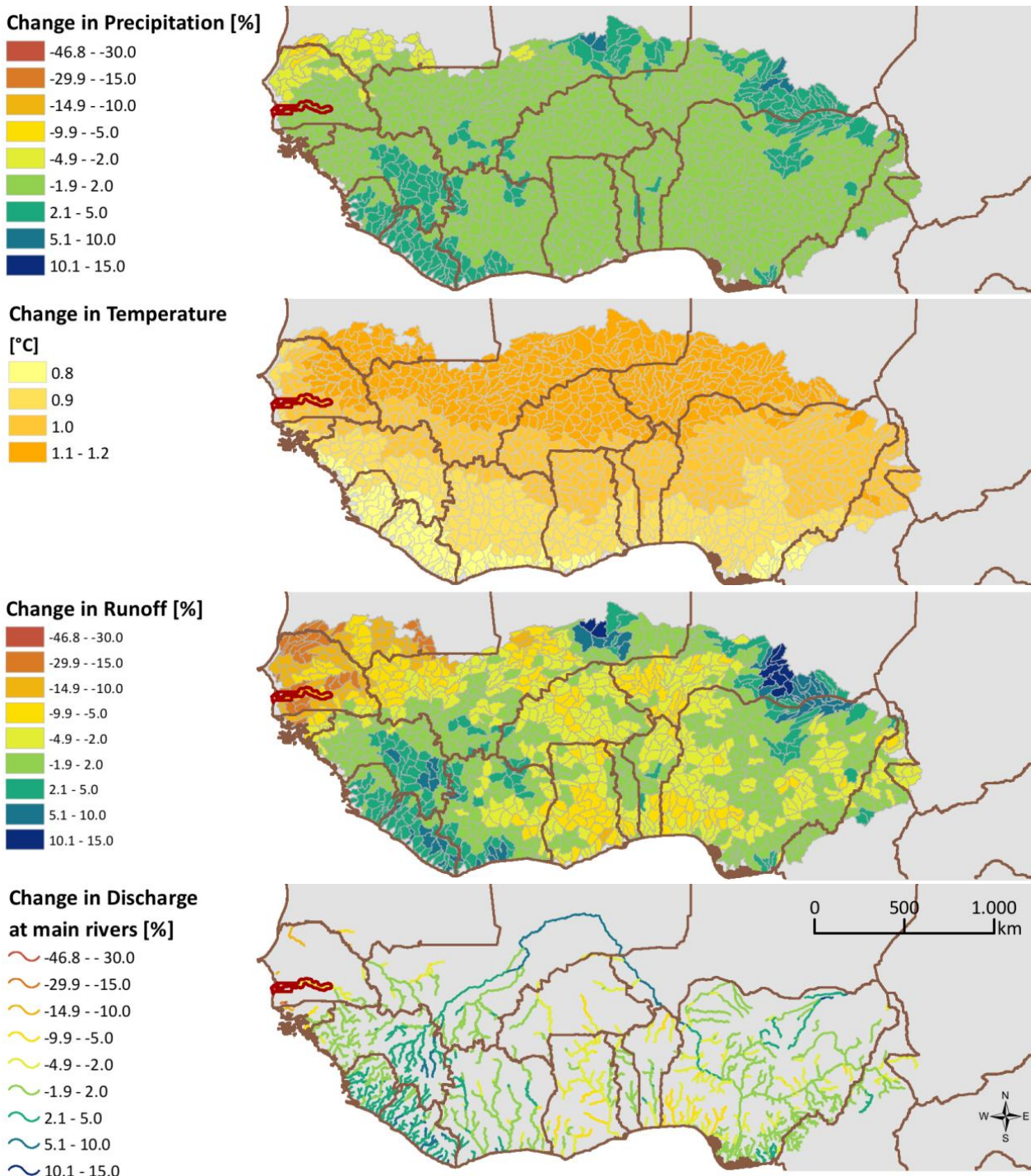
All river reaches classified as having an attractive theoretical hydropower potential for small HPP and medium/large HPP are located in the upstream sections of the river outside the country.



# CLIMATE CHANGE

Climate change may have considerable impact on future water resources and thus hydropower generation. The following figures show an assessment of climate change projections for West Africa based on 15 Regional Climate Models of the CORDEX-Africa ensemble. Two Representative Concentration Pathways (RCP4.5 and RCP8.5) were considered, thus yielding a total of 30 climate model runs. Future runoff was simulated by driving a water balance model with precipitation and temperature climate change signals with respect to the reference period 1998-2014.

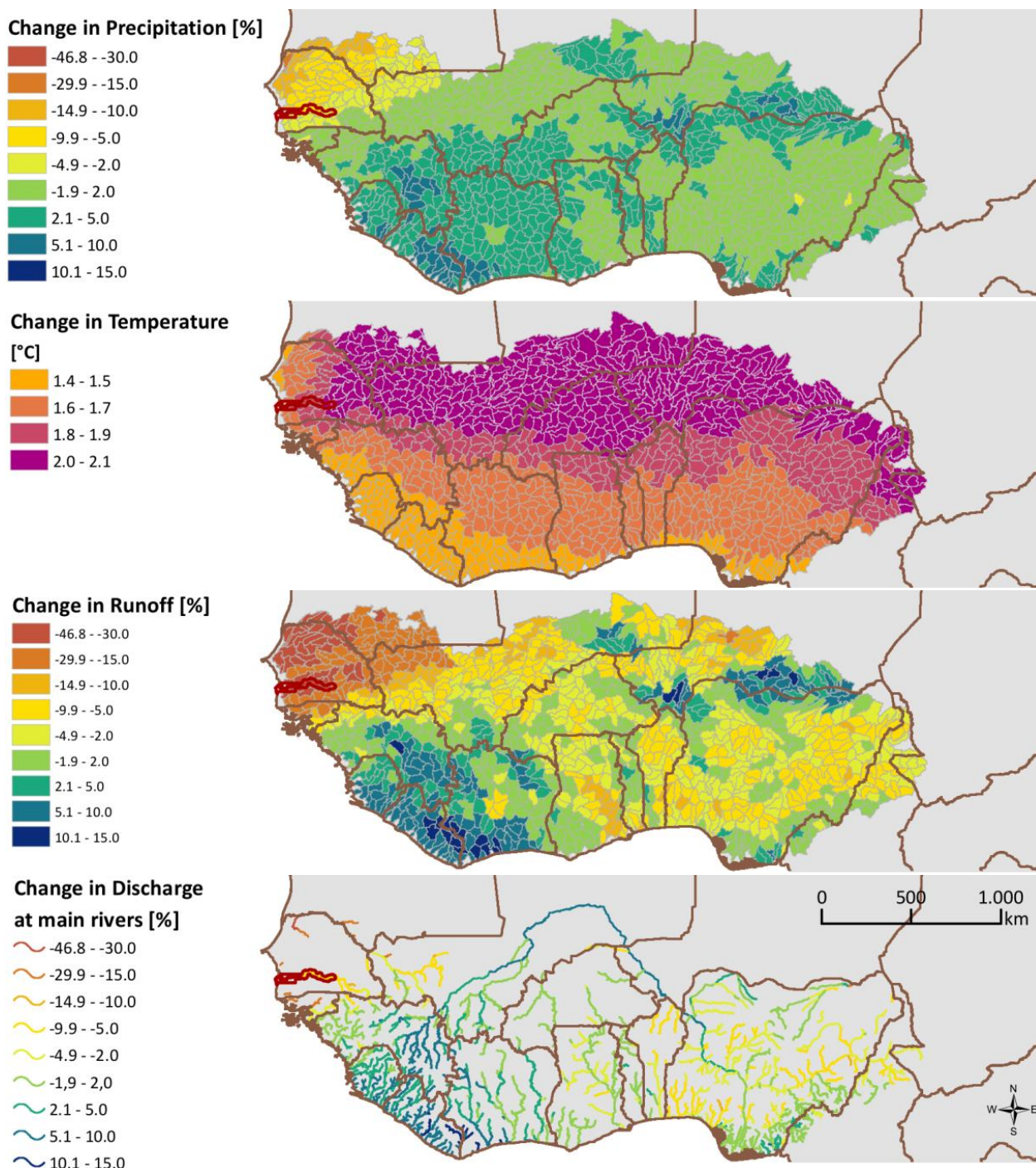
## Projections for the Near Future 2026-2045



## Projections for the Far Future 2046-2065

The maps below show the expected impact of climate change on future mean annual water resources. From the 30 climate model runs the median result was computed to generate the maps, which show change signals comparing the future periods 2026-2045 (previous page) and 2046-2065 (this page) vs. the reference period 1998-2014.

In large parts of West Africa increase or almost no change is projected for future precipitation. However, in The Gambia future precipitation is projected to decrease. The combined effects of future precipitation and considerable warming (which affects evapotranspiration) were simulated with a water balance model to compute future runoff. In The Gambia a considerable decrease is projected for future runoff (median of 30 model runs). However, discharge of the Gambia River is projected to decrease only slightly as the headwater regions in Guinea show no decrease in future precipitation.



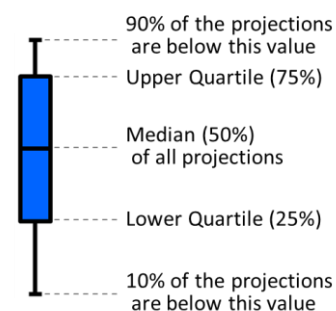
## Projected Change in Discharge for Selected Gauges

Future mean annual discharge was estimated with data from 30 different climate model runs. Boxplots are presented to summarize the spread in the simulation results (see explanation at right).

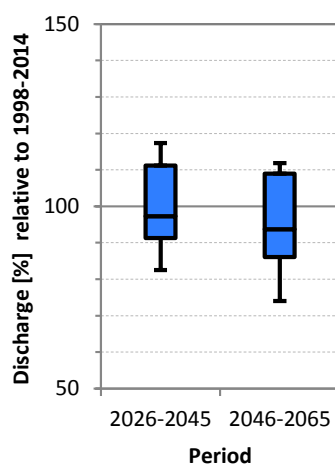
For the Gambia River there is a tendency of climate models to project a decrease in future discharge. The median of all climate model projections shows a decrease of -4 % in the near future and -7 % in the far future. However, the uncertainty in the climate model projections is high as the results with individual climate models may show either increase or decrease in discharge, as illustrated in the boxplot with the upper and lower quartile.

Overall the climate change impact assessment shows that given the projections with the most detailed climate models currently available (CORDEX-Africa) a slight decrease of discharge may be expected in the future.

**Boxplot summarizing projections with 30 climate model runs**



**Gambia River at Gouloumbou**



## ACKNOWLEDGEMENTS

This study was conducted by Pöyry Energy GmbH (Vienna, Austria) for the ECOWAS Centre for Renewable Energy and Energy Efficiency (ECREEE, Praia, Cabo Verde). This is a contribution to the ECOWAS Small-Scale Hydro Power Program, which aims to develop the small-scale hydropower sector in West Africa and is funded by the Austrian Development Agency (ADA) and the Spanish Agency for International Development Cooperation (AECID).

Observed discharge data were used for hydrological model calibration and were obtained from the following sources: Global Runoff Data Centre (GRDC), Volta Basin Authority, Niger Basin Authority, Senegal & Gambia Basin Authorities (OMVS, OMVG), Liberia National Hydrological Service, Sierra Leone National Hydrological Service, Japan International Cooperation Agency (JICA).

Precipitation data 1998-2014 are based on Tropical Rainfall Measurement Mission (TRMM 3B42 v7). Additional precipitation data 1950-2010 for model calibration were obtained from the Global Precipitation Climatology Centre (GPCC). Air temperature and potential evapotranspiration data were obtained from the Climatic Research Unit (CRU, Univ. East Anglia), with additional data from the CLIMWAT database of FAO. River network and elevation data were derived from the Hydrosheds dataset (USGS). Climate model data were obtained from the Coordinated Regional Downscaling Experiment for Africa (CORDEX-Africa), which is a project of the World Climate Research Program.

The delineation of climate zones is based on: L'Hôte Y, Dubreuil P, Lericque J. 1996. *Carte des types de climats en Afrique Noire à l'ouest du Congo. Rappels, et extension aux régimes hydrologiques*. In: *L'hydrologie tropicale: géoscience et outil pour le développement* (Actes de la conférence de Paris, mai 1995). IAHS Publ. no. 238, p. 55-65

More information about the general methodology for the GIS hydropower resource mapping is available in: Kling H, Stanzel P, Fuchs M. 2016. *Regional assessment of the hydropower potential of rivers in West Africa*. Energy Procedia, Elsevier, Special Issue of ERE, 8 pp.

